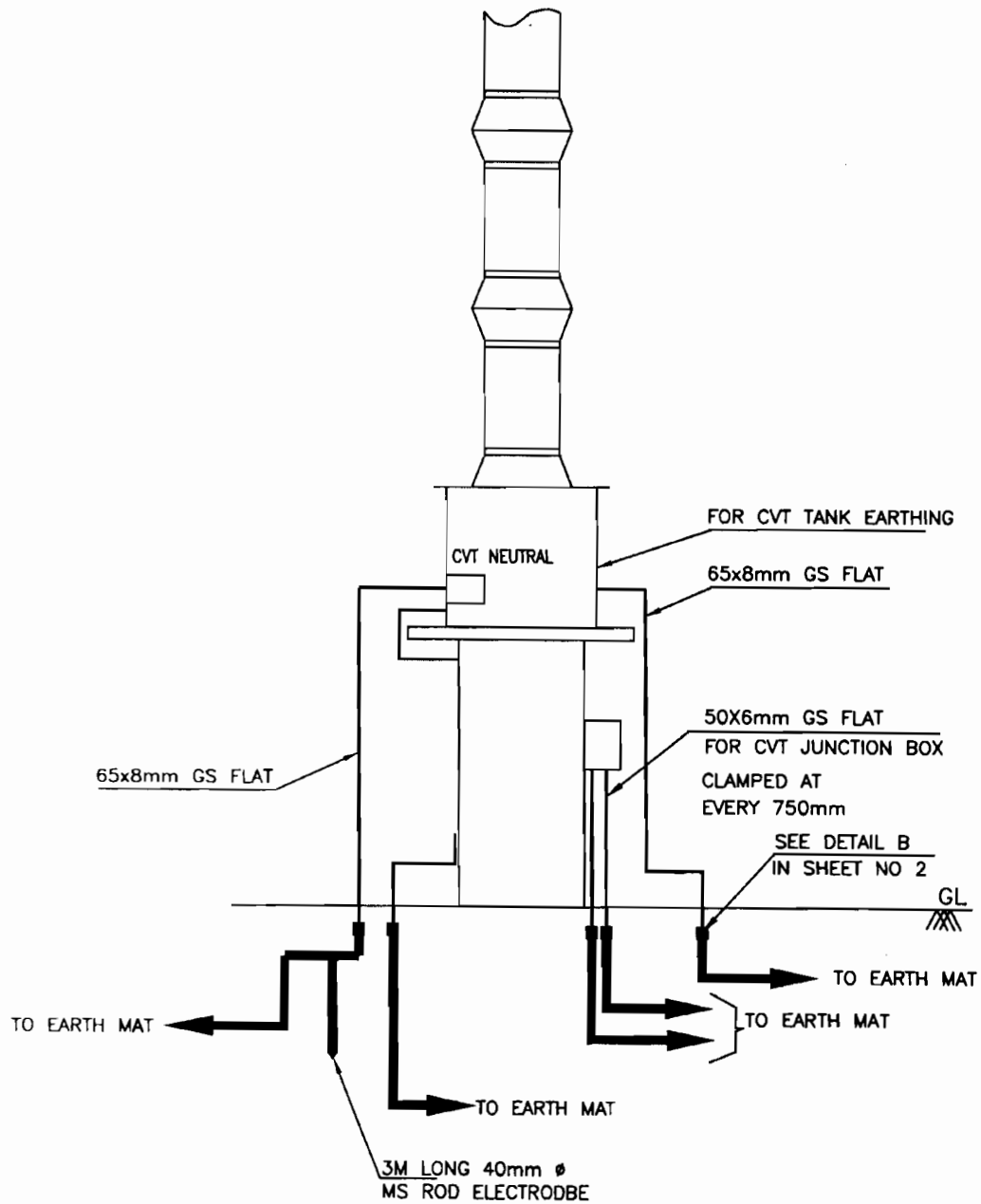


NOTE:

1) * BOLT SIZE AND HOLE SIZE SHALL BE TO SUIT RESPECTIVE EQPT./STRUCTURE.



EQUIPMENT EARTHING DETAILS 400kV SF6 CIRCUIT BREAKER

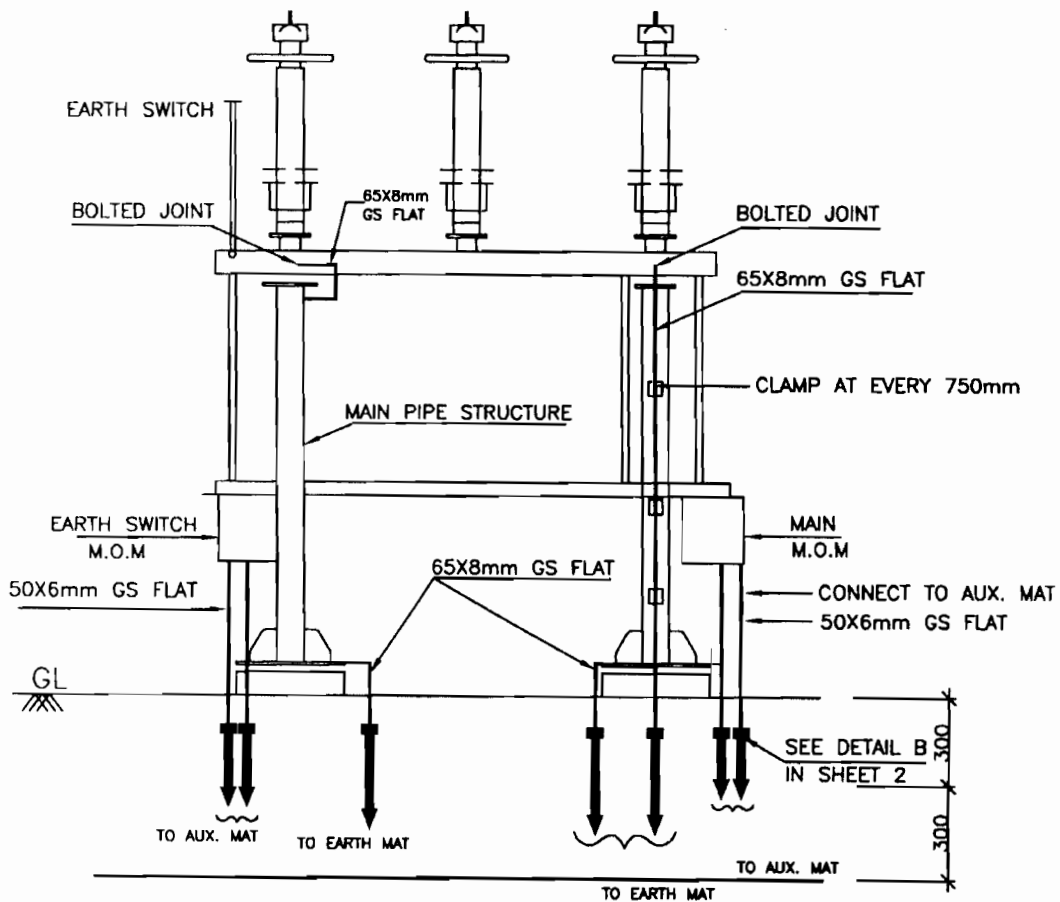


ROD ELECTRODE = 1 NO.



EQUIPMENT EARTHING DETAILS 400/132KV CVT & EMVT

SHEET No.



NOTES

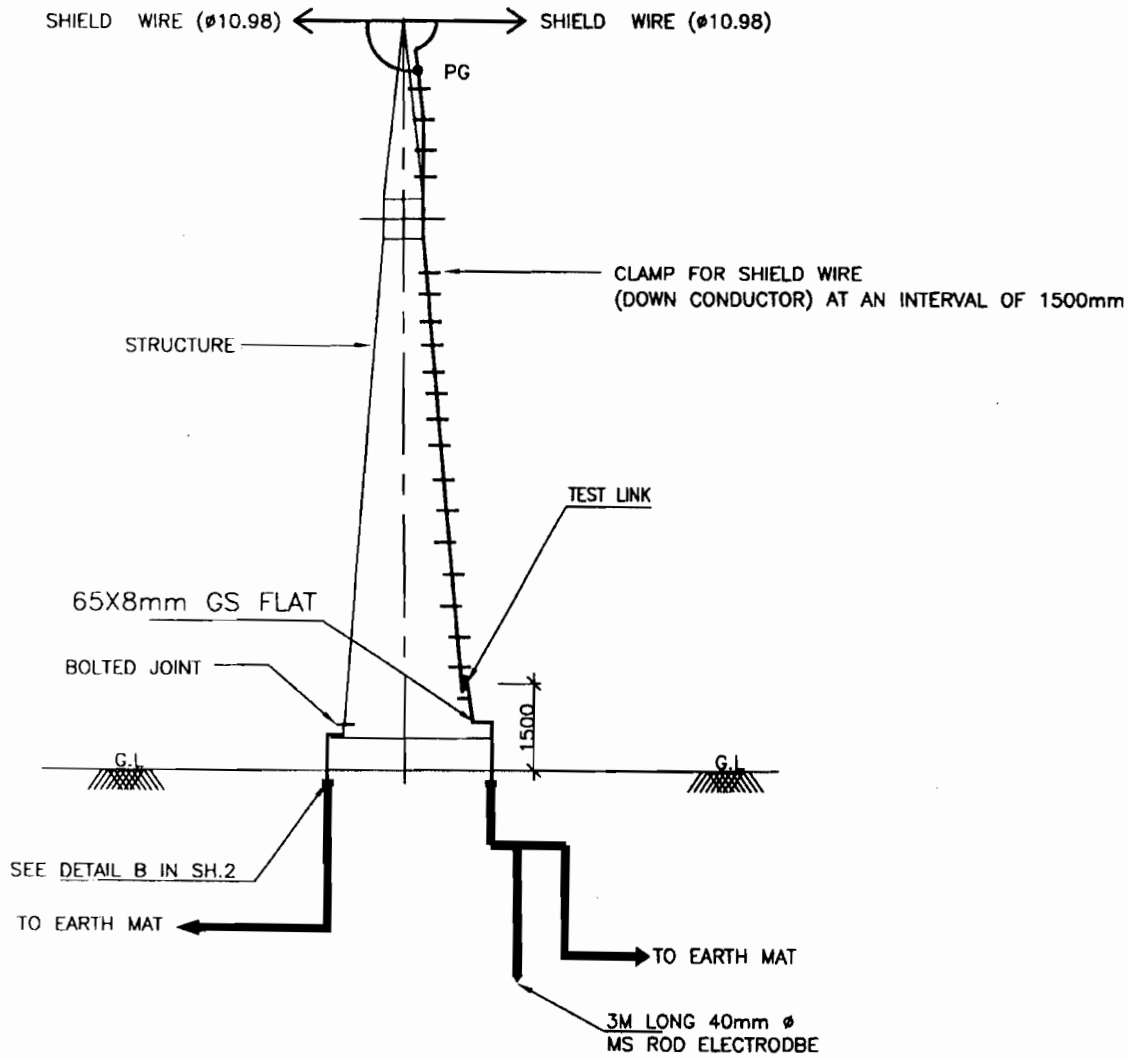
1. AUXILIARY EARTH MAT SHALL BE PROVIDED BELOW EVERY MOM BOX (REFER SHEET 14)



EQUIPMENT EARTHING DETAILS

400/132KV DOUBLE BREAK

ISOLATOR (TYPICAL) WITH ONE EARTH SWITCH



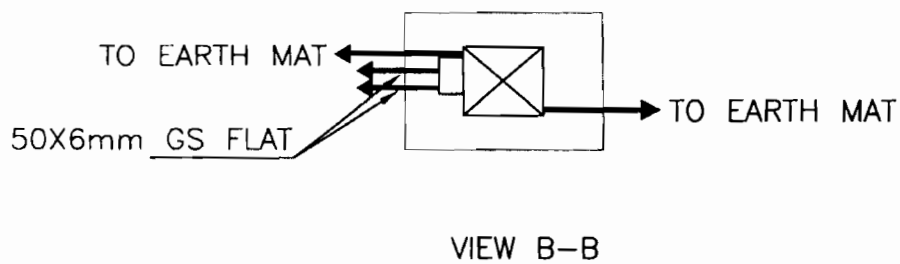
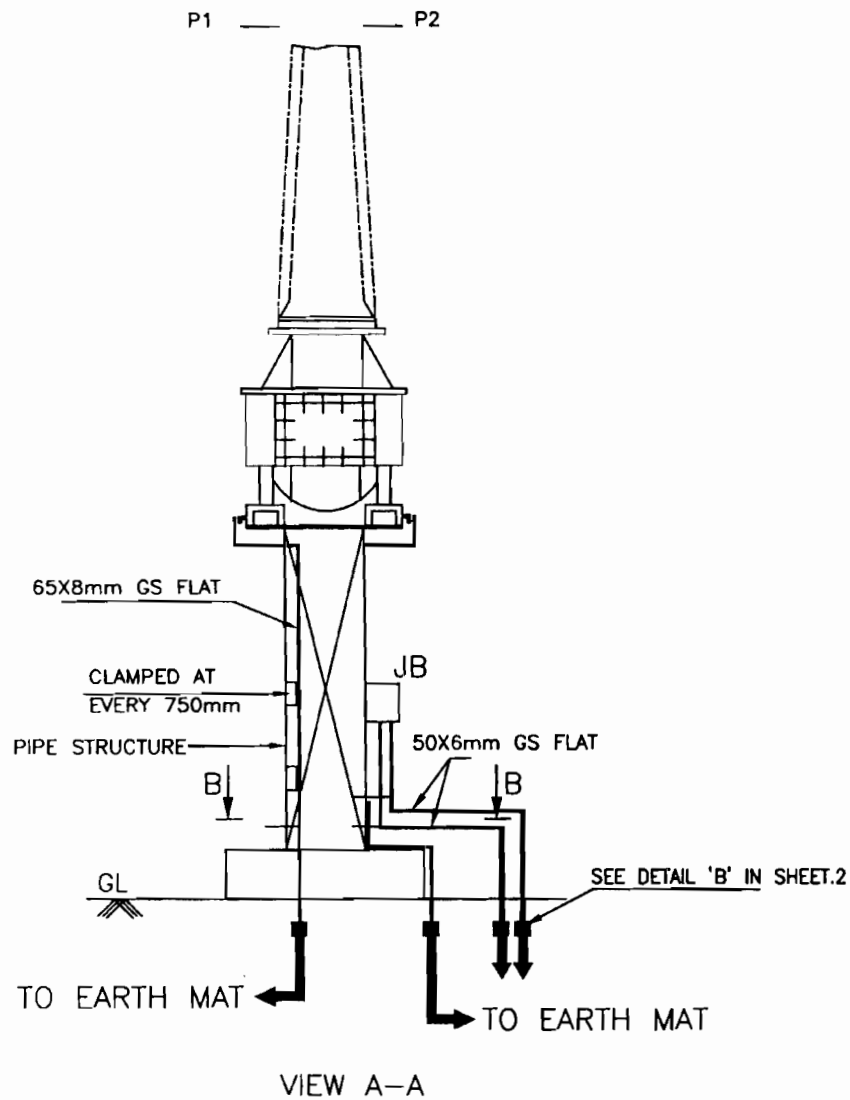
NOTE:

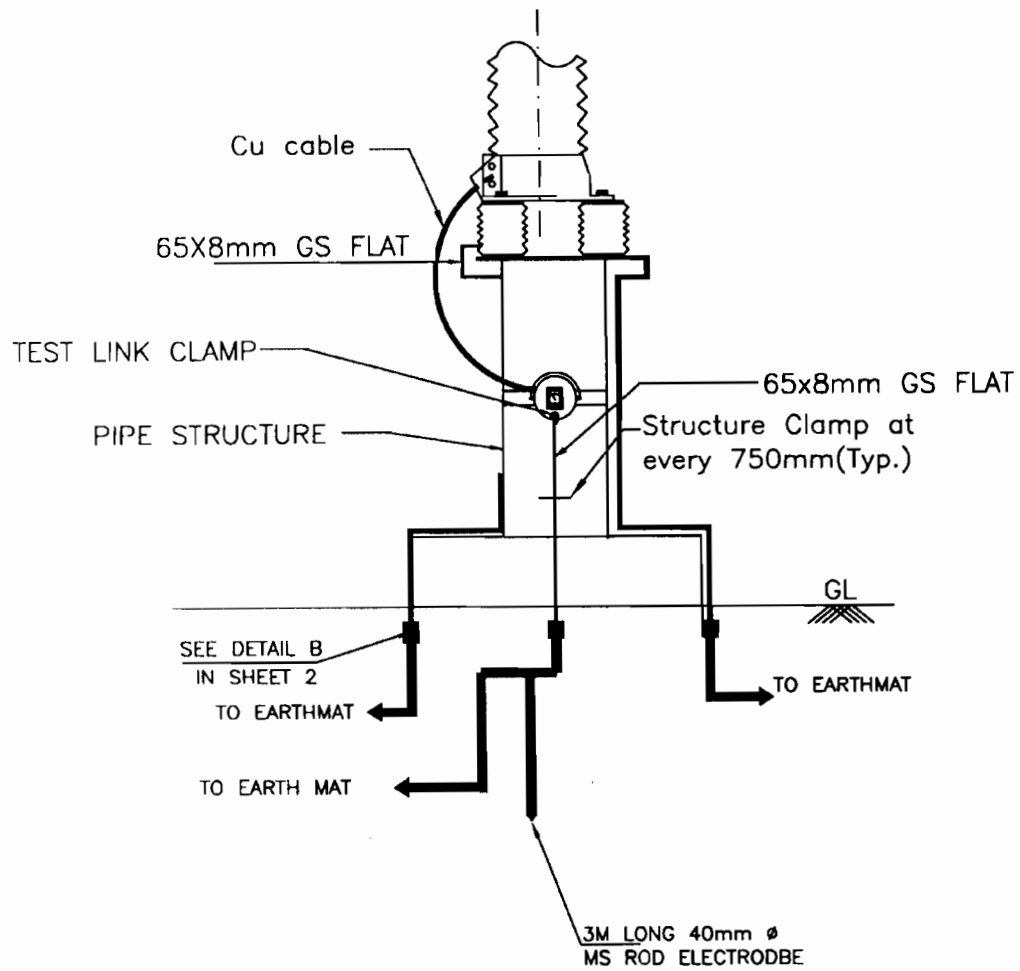
1. NO. OF ROD ELECTRODE : 1 NO. PER TOWER WITH DOWN CONDUCTOR.



EQUIPMENT EARTHING DETAILS
TOWER WITH SHIELD WIRE

SHEET No.





NOTES;

1. LA SHALL BE EARTHED THROUGH EARTH TERMINAL OF SURGE COUNTER
2. NO. OF ROD ELECTRODE 1 NO. PER PHASE,
3. TEST LINK SHALL HAVE PROVISION TO BOLT TEST LEAD BEFORE ISOLATING THE MAIN EARTHING CONNECTIONS (AS PER SKETCH ABOVE) = 1NO.



EQUIPMENT EARTHING DETAILS
LIGHTNING ARRESTER(360/120kV)